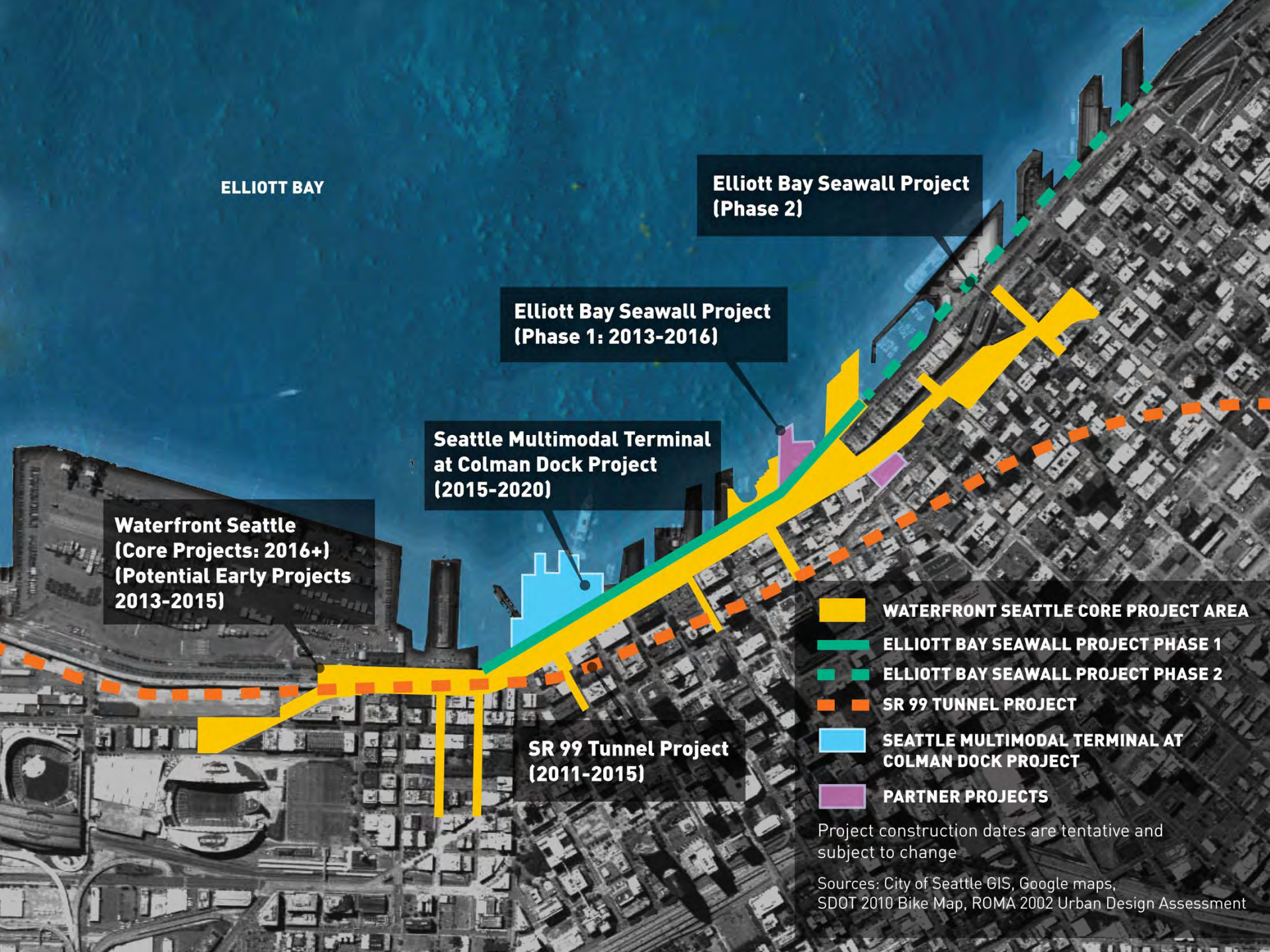




**PORT OF SEATTLE COMMISSION
SEPTEMBER 10, 2013**

AGENDA

- Overview of Waterfront Seattle and associated interests
- Quick Seawall Update
- Waterfront Seattle
 - Schedule
 - Street Design
 - Budget/Funding



ELLIOTT BAY

**Elliott Bay Seawall Project
(Phase 2)**

**Elliott Bay Seawall Project
(Phase 1: 2013-2016)**

**Seattle Multimodal Terminal
at Colman Dock Project
(2015-2020)**

**Waterfront Seattle
(Core Projects: 2016+)
(Potential Early Projects
2013-2015)**

**SR 99 Tunnel Project
(2011-2015)**

-  WATERFRONT SEATTLE CORE PROJECT AREA
-  ELLIOTT BAY SEAWALL PROJECT PHASE 1
-  ELLIOTT BAY SEAWALL PROJECT PHASE 2
-  SR 99 TUNNEL PROJECT
-  SEATTLE MULTIMODAL TERMINAL AT COLMAN DOCK PROJECT
-  PARTNER PROJECTS

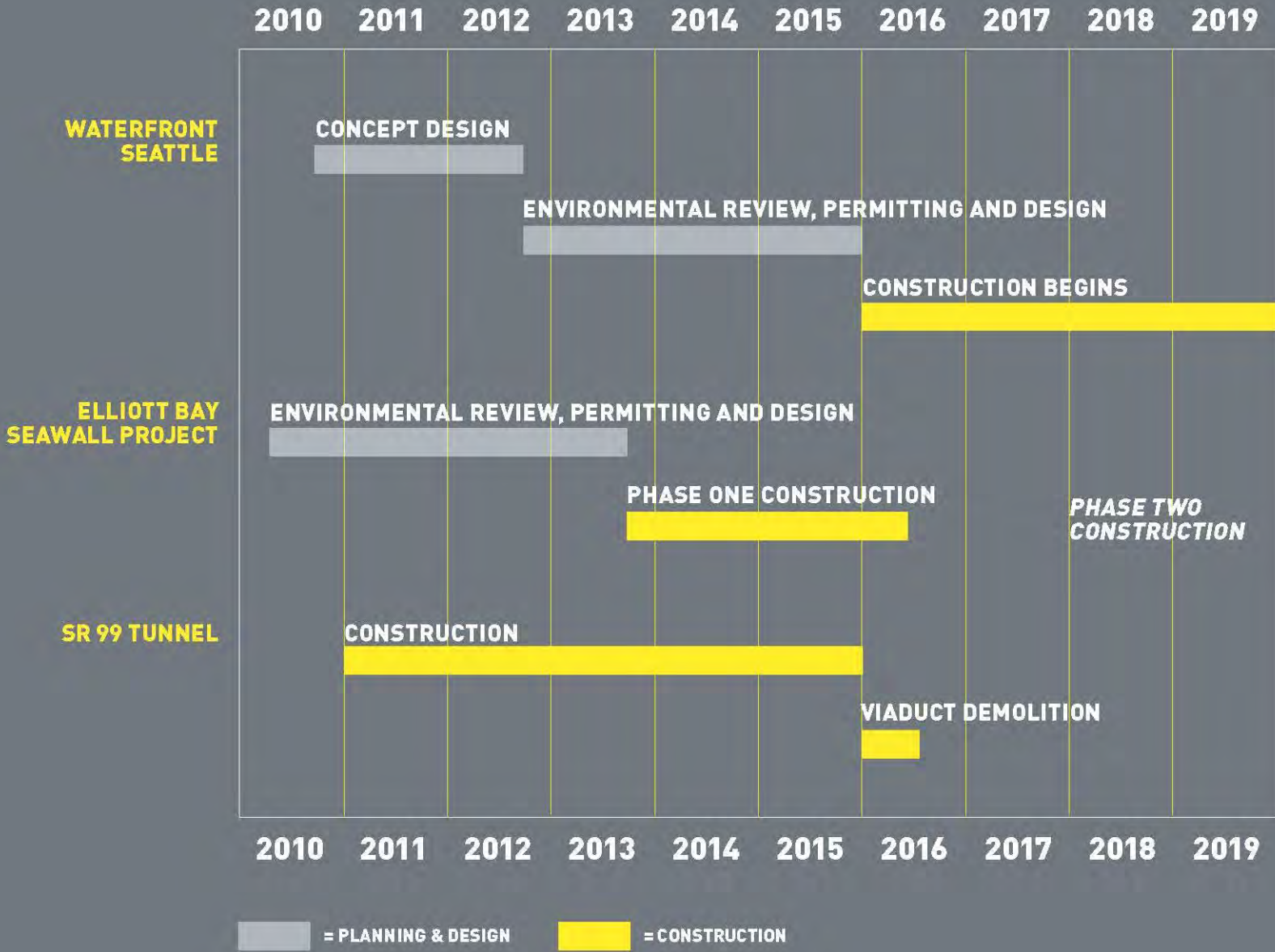
Project construction dates are tentative and subject to change

Sources: City of Seattle GIS, Google maps, SDOT 2010 Bike Map, ROMA 2002 Urban Design Assessment

Getting Ready for Seawall Construction

- **Early work completed (April – Sept)**
 - 27 temporary utility poles installed along Alaskan Way
 - 4,500 linear feet of conduit installed
 - Widened Alaskan Way roadway (where temporary road will be located)
 - SCL electrical installation
- **Design completion and construction schedule refinement**
- **Continued permit coordination**
- **Continued planning with waterfront stakeholders**
- **Negotiate MACC and subcontracting**





Core Projects



- 1 RAILROAD WAY
- 2 SEAWALL BEACH
- 3 S. MAIN ST IMPROVEMENTS
- 4 S. WASH. ST. IMPROVEMENTS
- 5 COLMAN DOCK GALLERY
- 6 MARION ST. BRIDGE
- 7 COLUMBIA ST. IMPROVEMENTS
- 8 HISTORIC PIER WALK
- 9 SENECA ST. IMPROVEMENTS
- 10 TIDELINE PROMENADE
- 11 UNION STREET PIER
- 12 UNION ST. IMPROVEMENTS
- 13 AQUARIUM PLAZA
- 14 PIER 62/63
- 15 OVERLOOK WALK
- 16 BELLTOWN BLUFF
- 17 BELLTOWN INTERIM IMPROVEMENTS
- 18 BELL ST. IMPROVEMENTS

0.5 MILE



THE VISION FOR ALASKAN WAY

- Create a **great urban street for all users**, including pedestrians, bicyclists, transit, freight, cars, parking and more!
- Provide effective regional **transportation** connections and improved local **east-west** connections
- **Integrate the street** into the overall design for the waterfront

Waterfront Streets



Alaskan Way

Elliott Way

0.5 MILE



STREET DESIGN ELEMENTS

- Two general purpose vehicle lanes in each direction
- North-south bicycle route
- Pedestrian crossings and promenade
- Curb space for parking, deliveries, etc.
- Transit service and connections
- Ferry access
- Freight route

PROMENADE



TWO-WAY CYCLE TRACK

- State of the art bicycle facility
- Safe, reliable and connected
- Separated from vehicle lanes and pedestrian promenade
- Encourages use by a wide range of cyclists
- Uses best practices in cycle track design





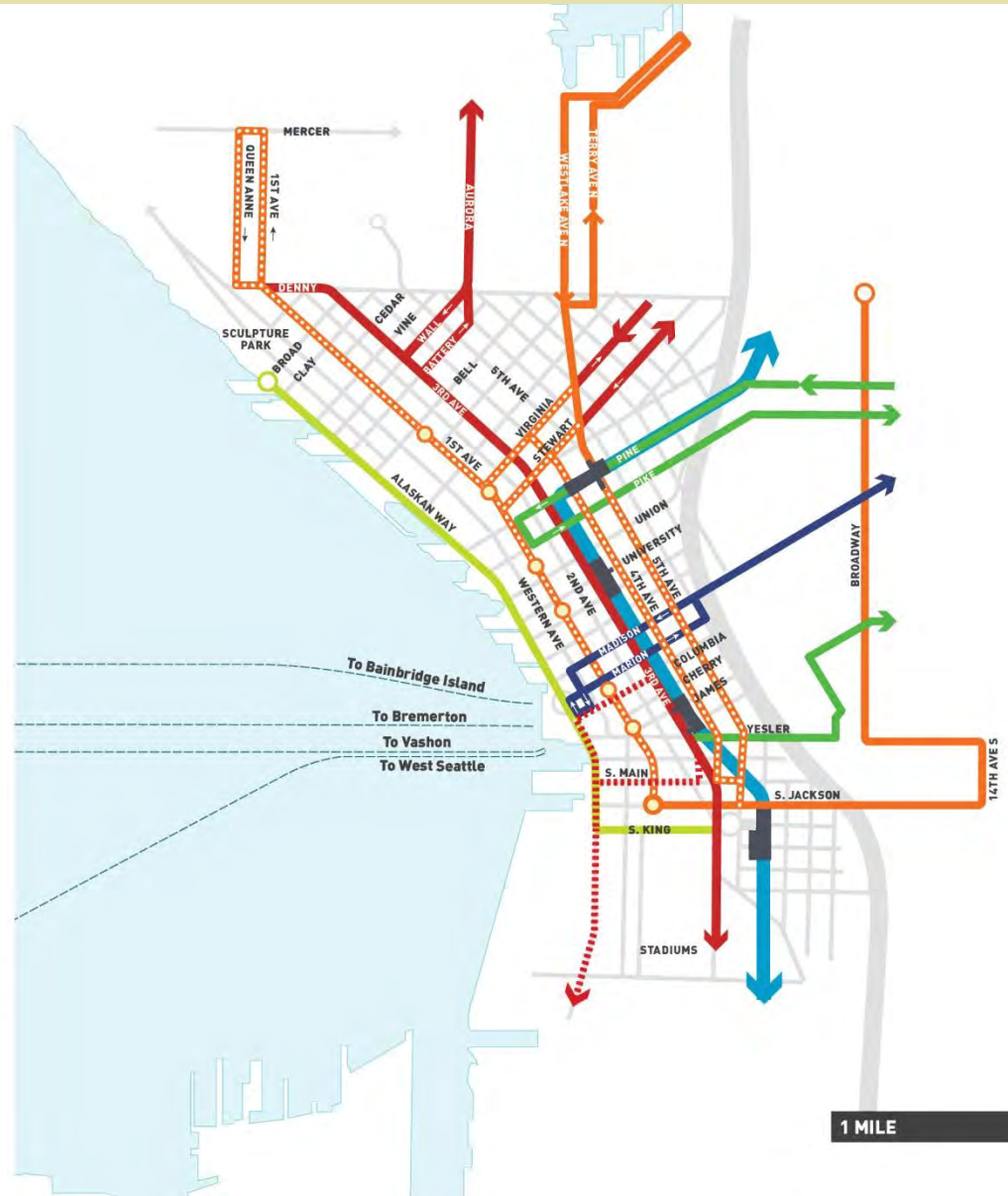
FREIGHT



**LOCAL
WATERFRONT
TRANSIT**

Waterfront Transit Access

-  LIGHT RAIL
-  TRANSIT TUNNEL STATIONS
-  BUS TRANSIT SPINE AND PATHWAYS
-  MADISON STREET HCT CORRIDOR
-  EXISTING AND PLANNED STREETCAR
-  ALTERNATIVE CENTER CITY CONNECTOR CORRIDORS
-  SW TRANSIT PATHWAY OPTIONS
-  FREQUENT TROLLEY BUS ROUTES
-  WATERFRONT CONNECTOR

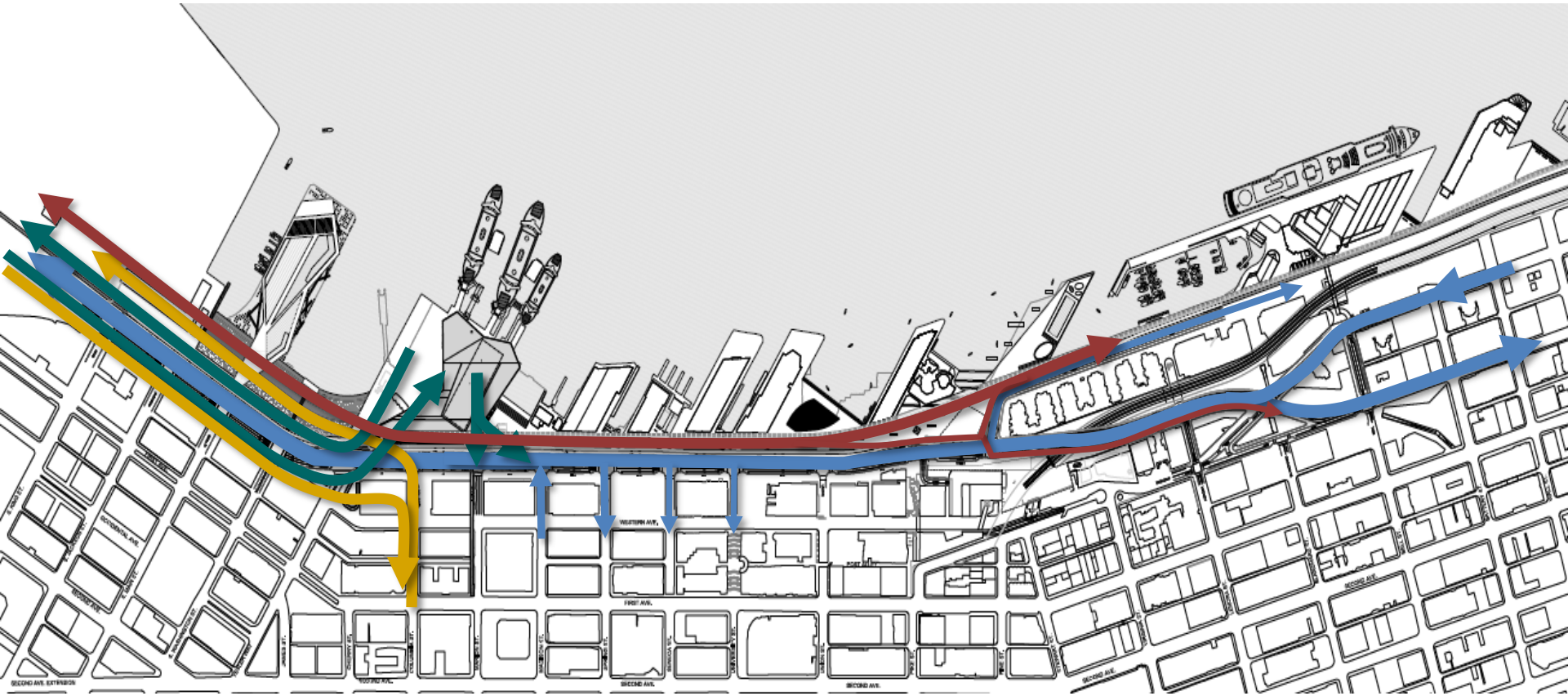




FUNCTIONS OF THE STREET

STREET DESIGN

FUNCTIONS OF THE STREET



- VEHICLES, PARKING AND LOADING**
- FERRIES: LOADING AND UNLOADING**
- TRANSIT: SW TRANSIT PATHWAY**
- NORTH/SOUTH BICYCLE AND PEDESTRIAN MOVEMENT**

STREET DESIGN

ALASKAN WAY

FUNCTIONS OF THE STREET



KING TO YESLER

- SWTP DEDICATED LANES (2)
- GENERAL PURPOSE LANES (4)
- FERRY QUEUING LANES (1-2)
- PARKING/LOADING (0-1)

YESLER TO MADISON

- SWTP DEDICATED LANES (0-2)
- GENERAL PURPOSE LANES (4)
- WATERFRONT TRANSIT (SHARED)
- FERRY PARKING/LOADING (0-2)

MADISON TO PINE

- GENERAL PURPOSE LANES (4)
- WATERFRONT TRANSIT (SHARED)
- PARKING/LOADING (2)

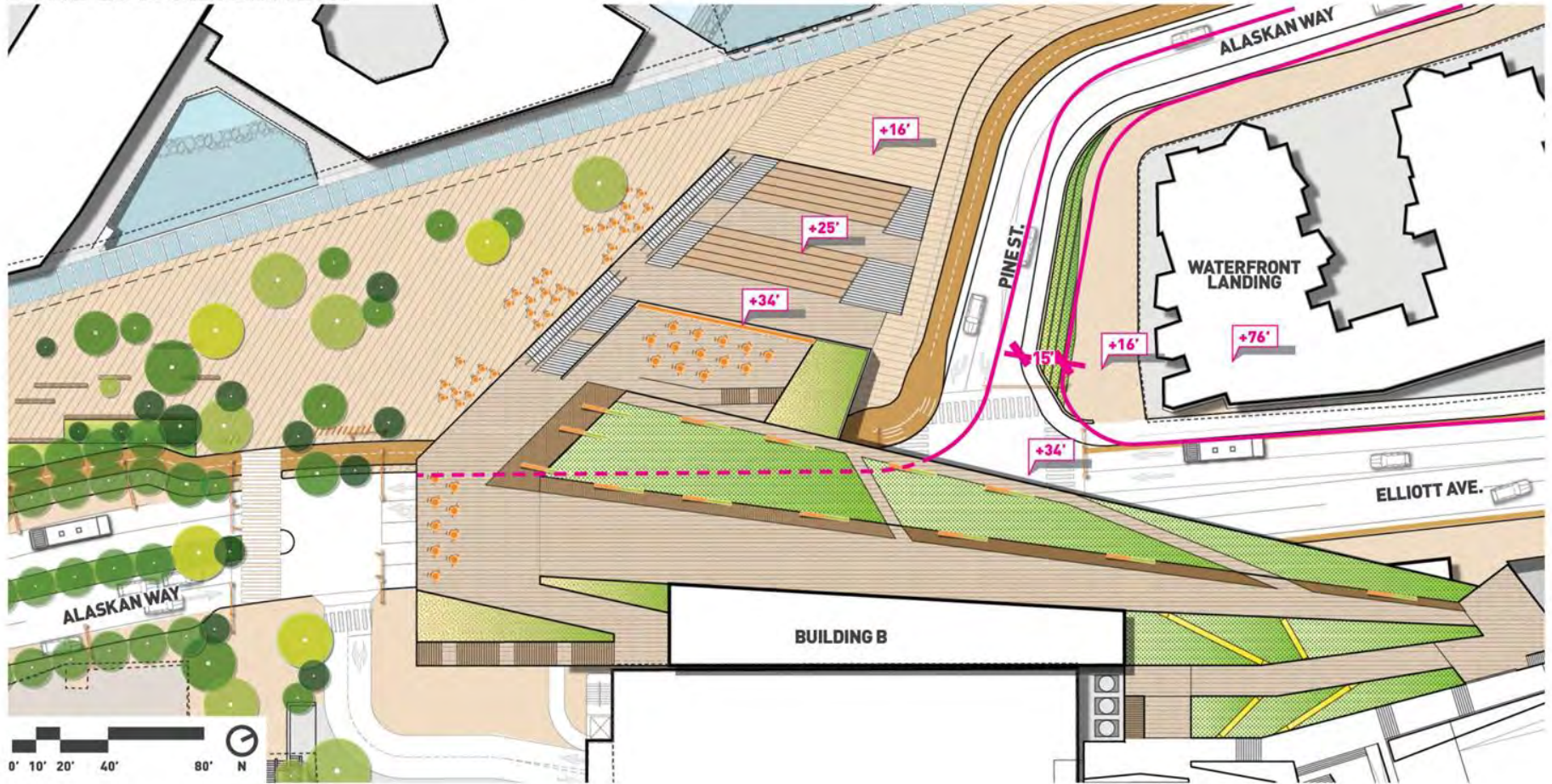
.25 MI.



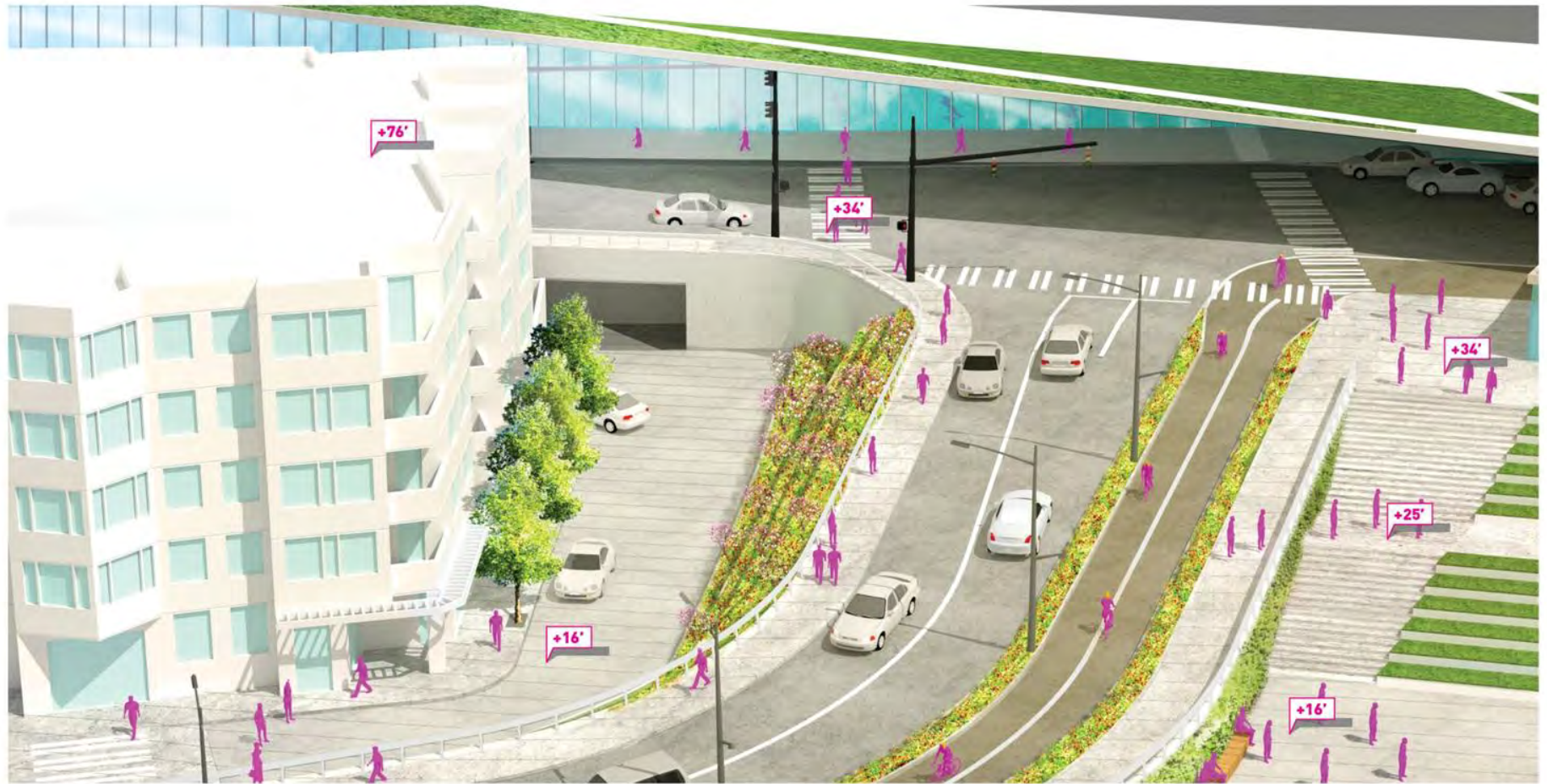
STREET DESIGN

PINE ST. INTERSECTION

JUNE 2013 ALIGNMENT



STREET DESIGN
PINE ST. INTERSECTION

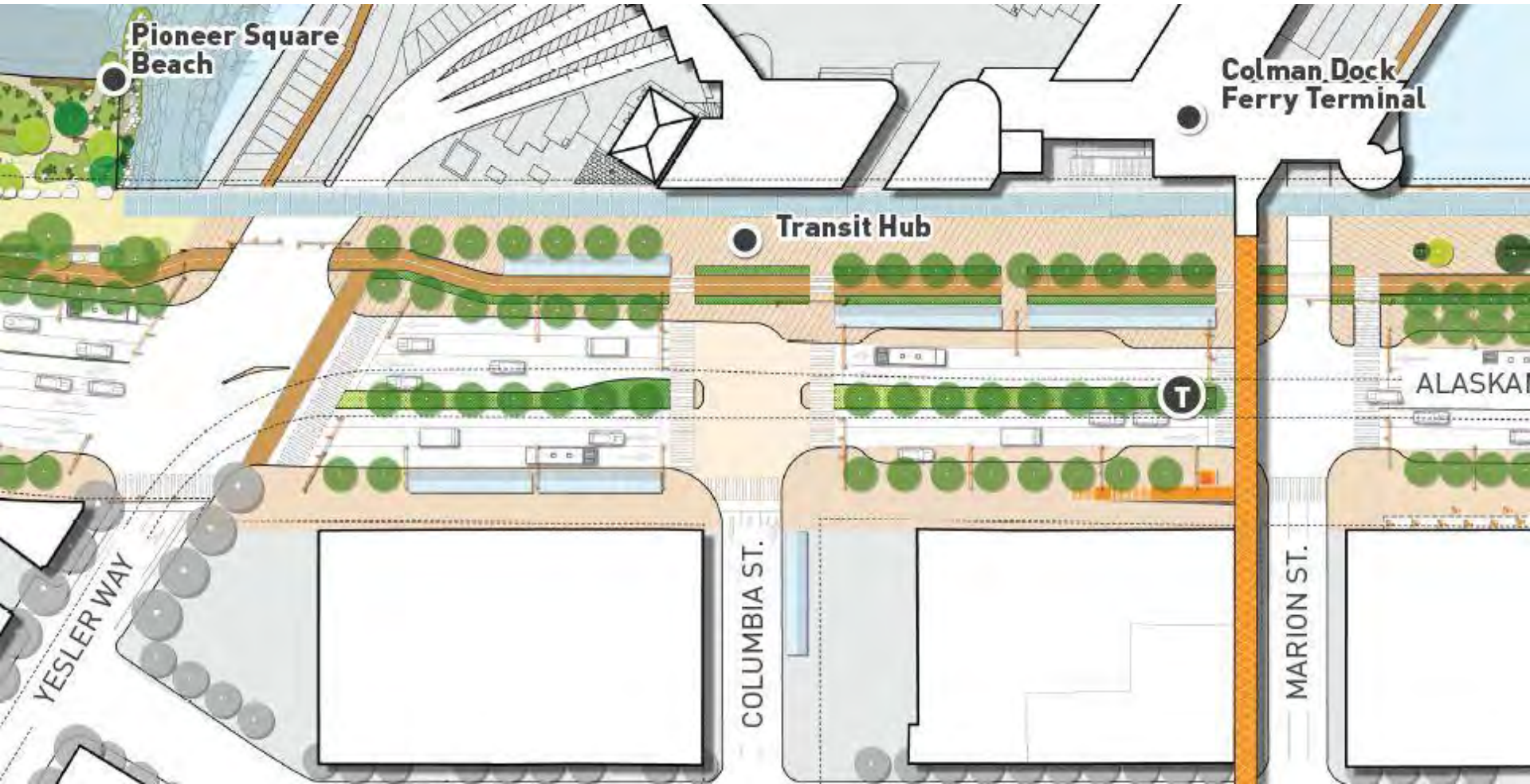


AERIAL, LOOKING EAST

STREET DESIGN

YESLER WAY TO MADISON ST.

JUNE 2013 - CURRENT STREET DESIGN



STREET DESIGN
COLUMBIA ST. INTERSECTION



STREET DESIGN

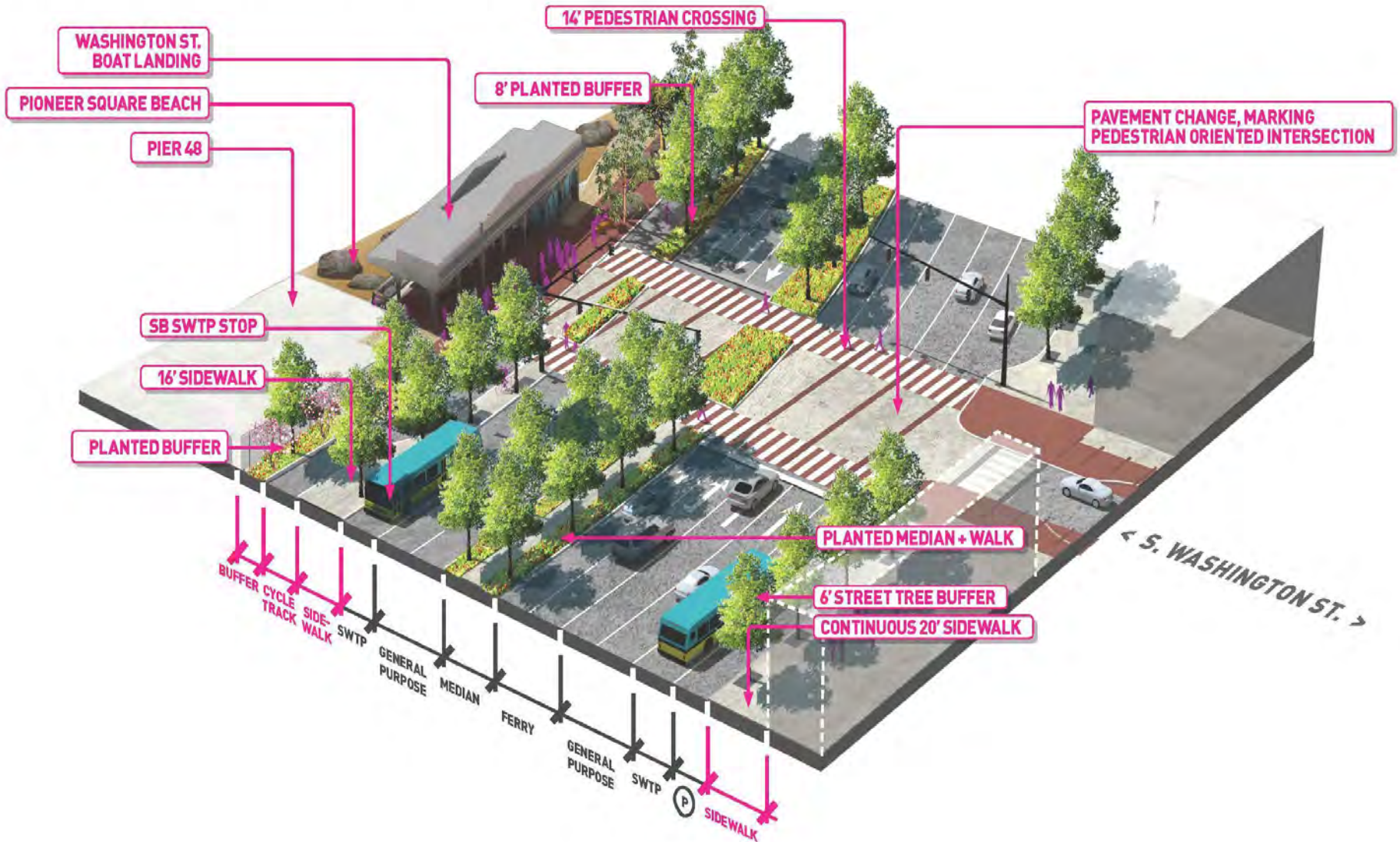
S. KING ST. TO YESLER WAY

JUNE 2013 - CURRENT DESIGN



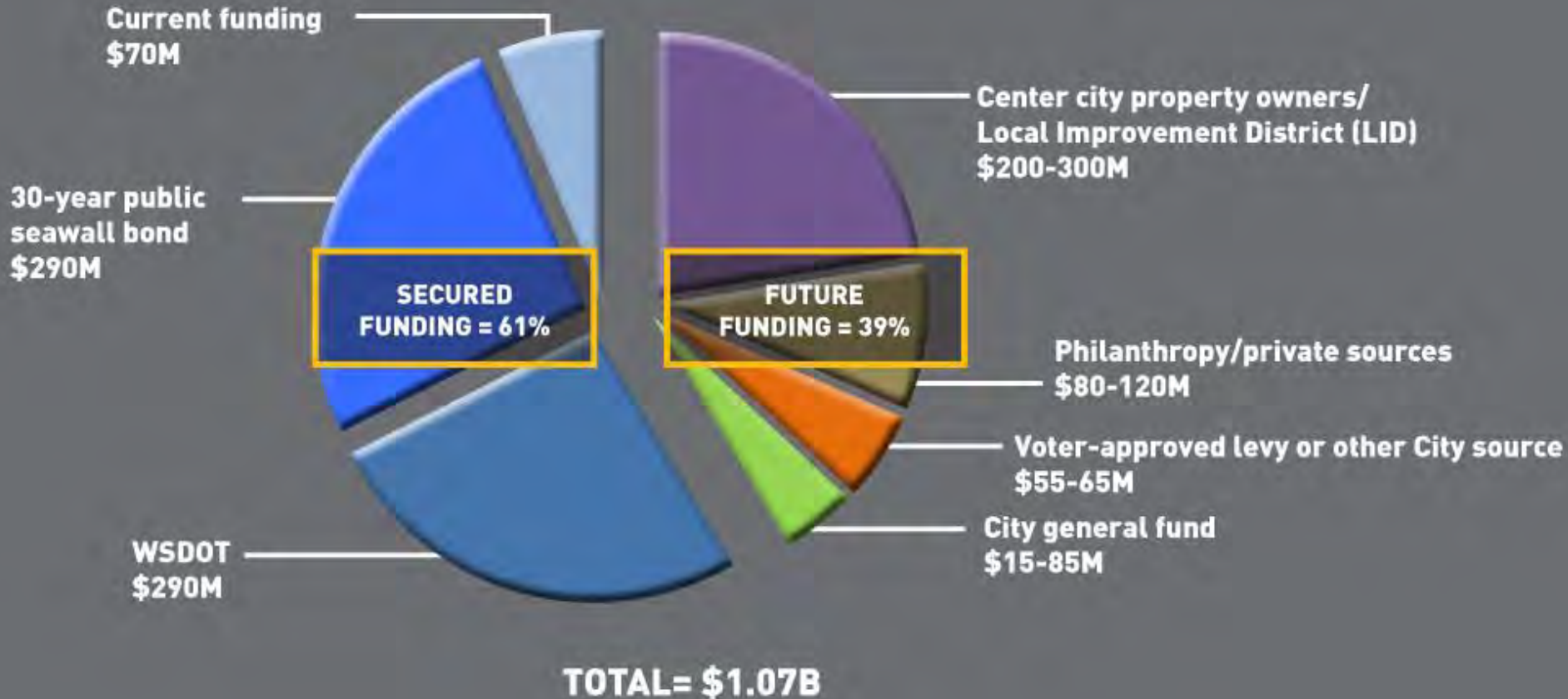
STREET DESIGN

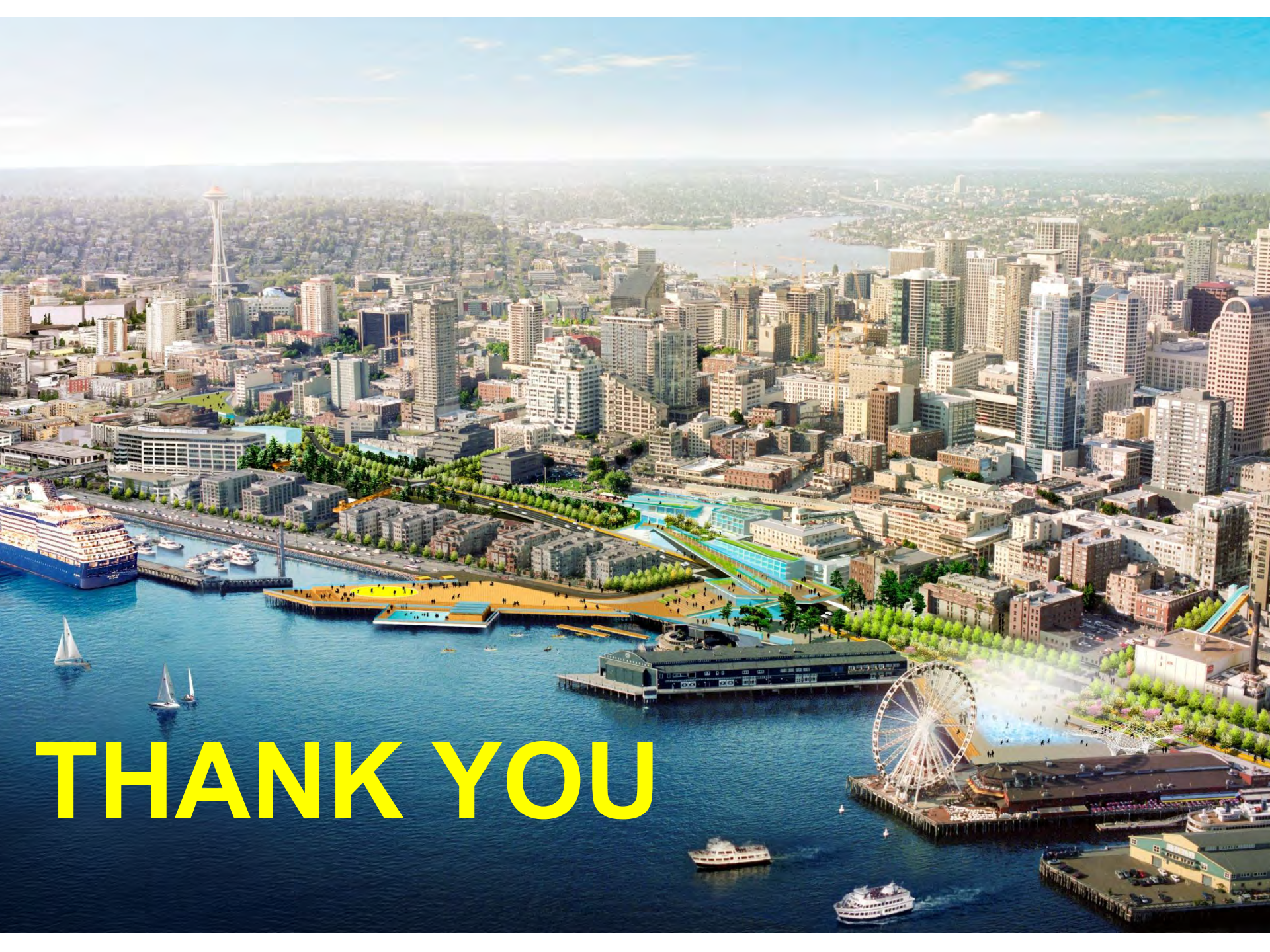
S. WASHINGTON ST. INTERSECTION



FUNDING SOURCES

PUBLIC + PRIVATE





THANK YOU